

WELCOME

Q1/2015 Operation Result Meeting

Apichart Lee-issaranukul

August 10 , 2015

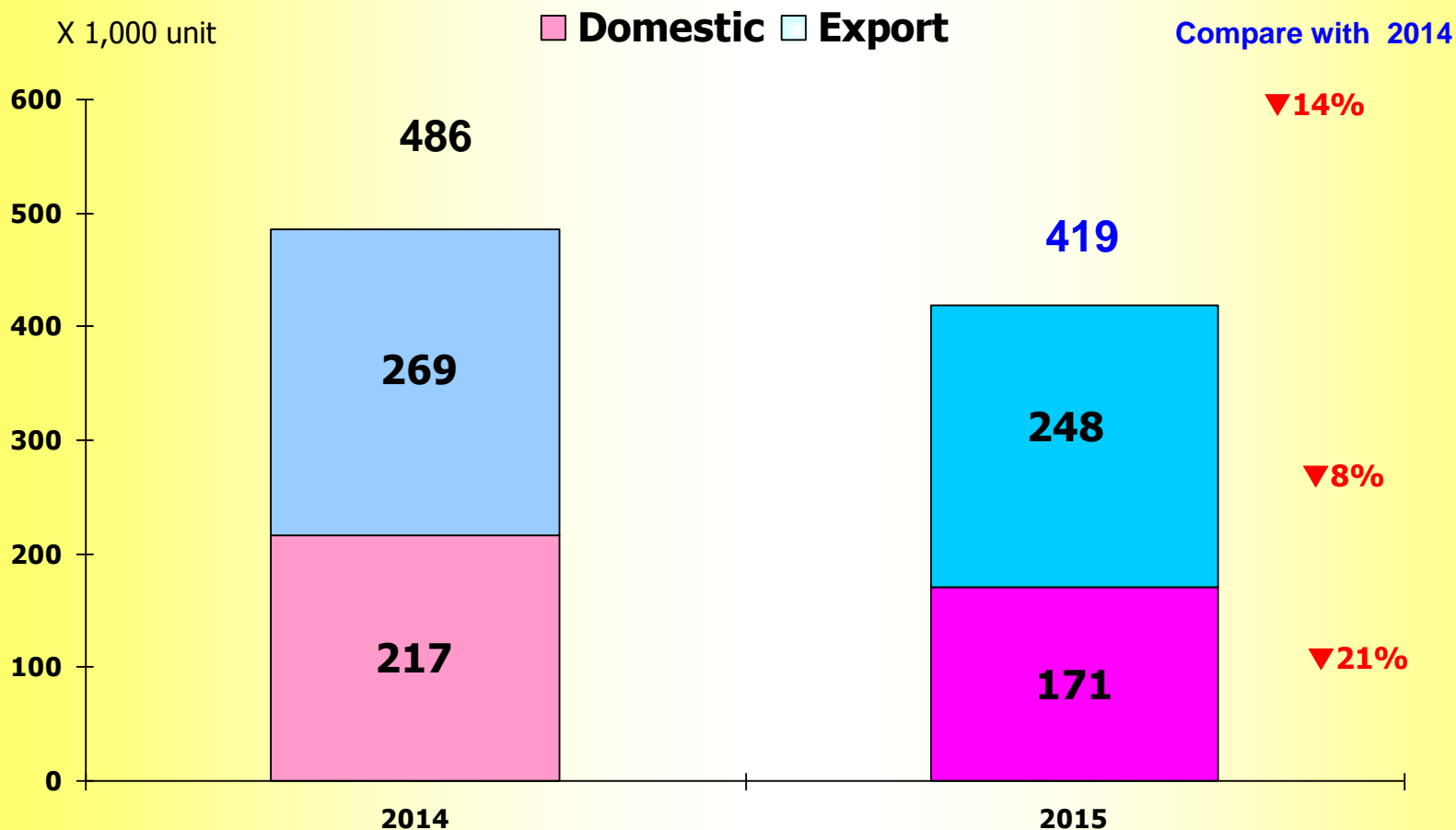
THAI STANLEY ELECTRIC PUBLIC COMPANY LIMITED

The completely integrated manufacturer of world class automotive lighting

Agenda

- 1. Market Trend – 2015 (April – June)**
- 2. The 1st Quarterly 2015 Financial Statement**
- 3. New Products**

4W Market Sale 2015 (April – June) Domestic & Export

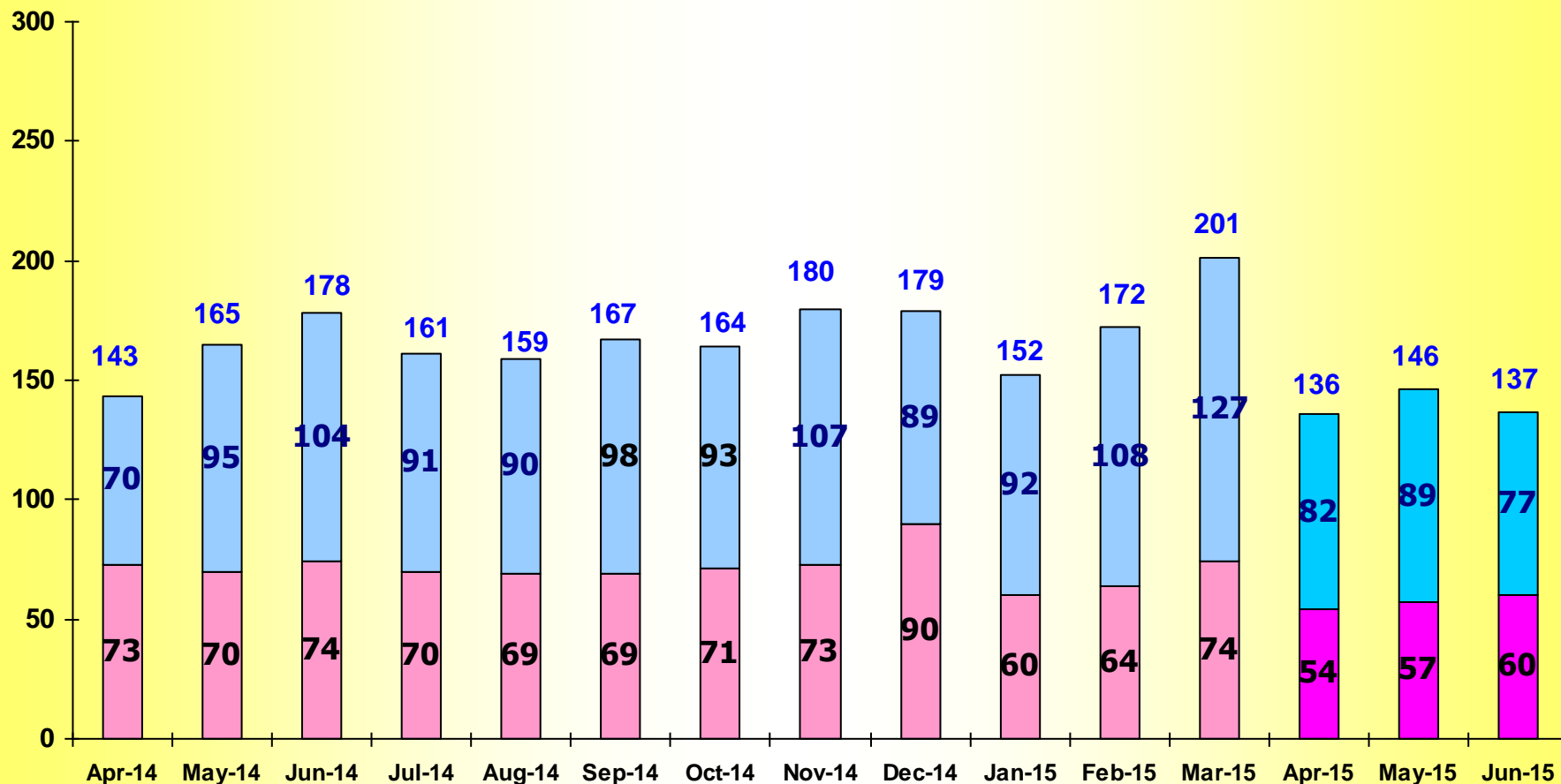


Source: The Federation of Thai Industries

4W Market Sale (Domestic & Export) (April 2014 – June 2015)

X 1,000 unit

Domestic Export

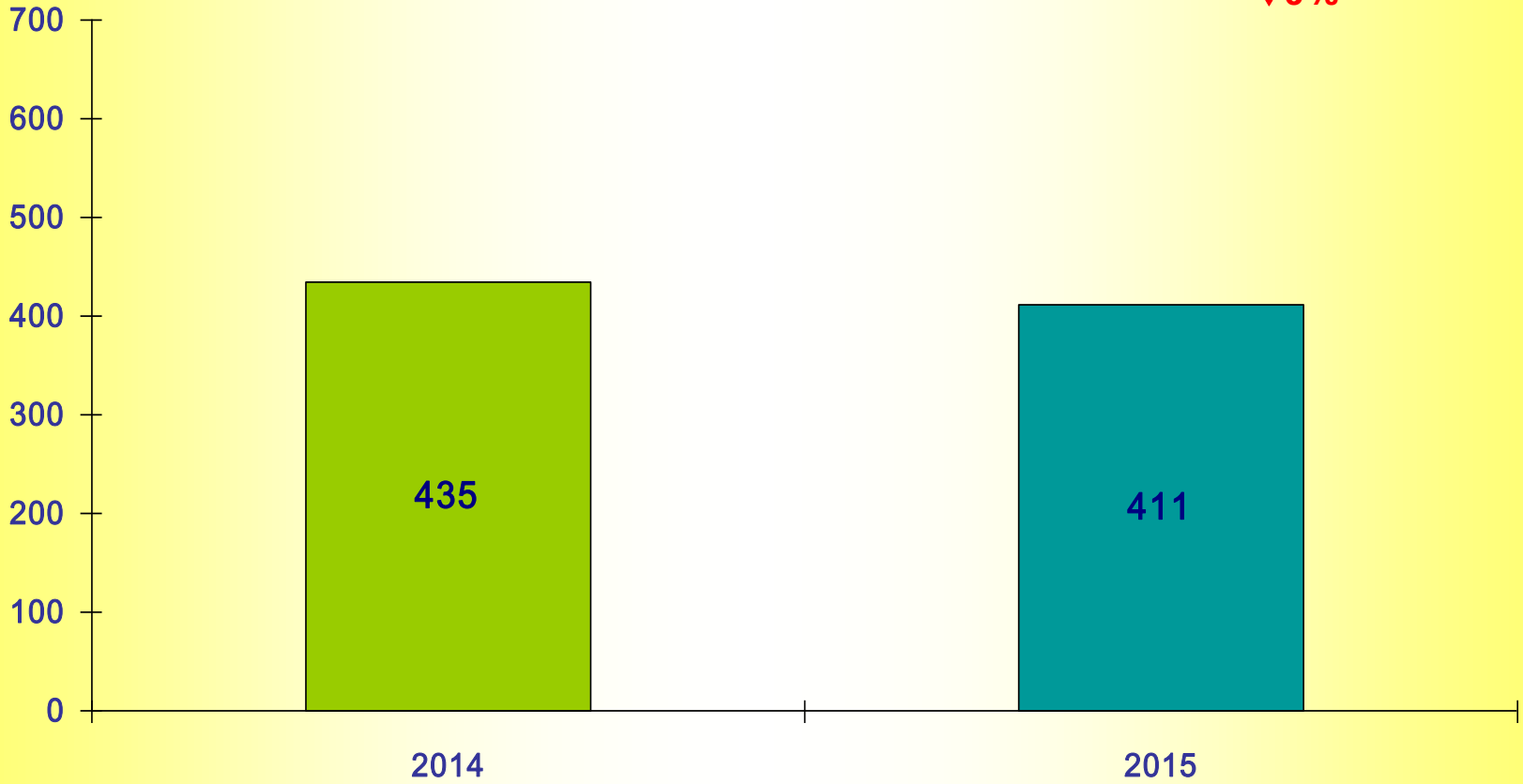


Source: The Federation of Thai Industries

4W Production (April – June 2015)

X 1,000 unit

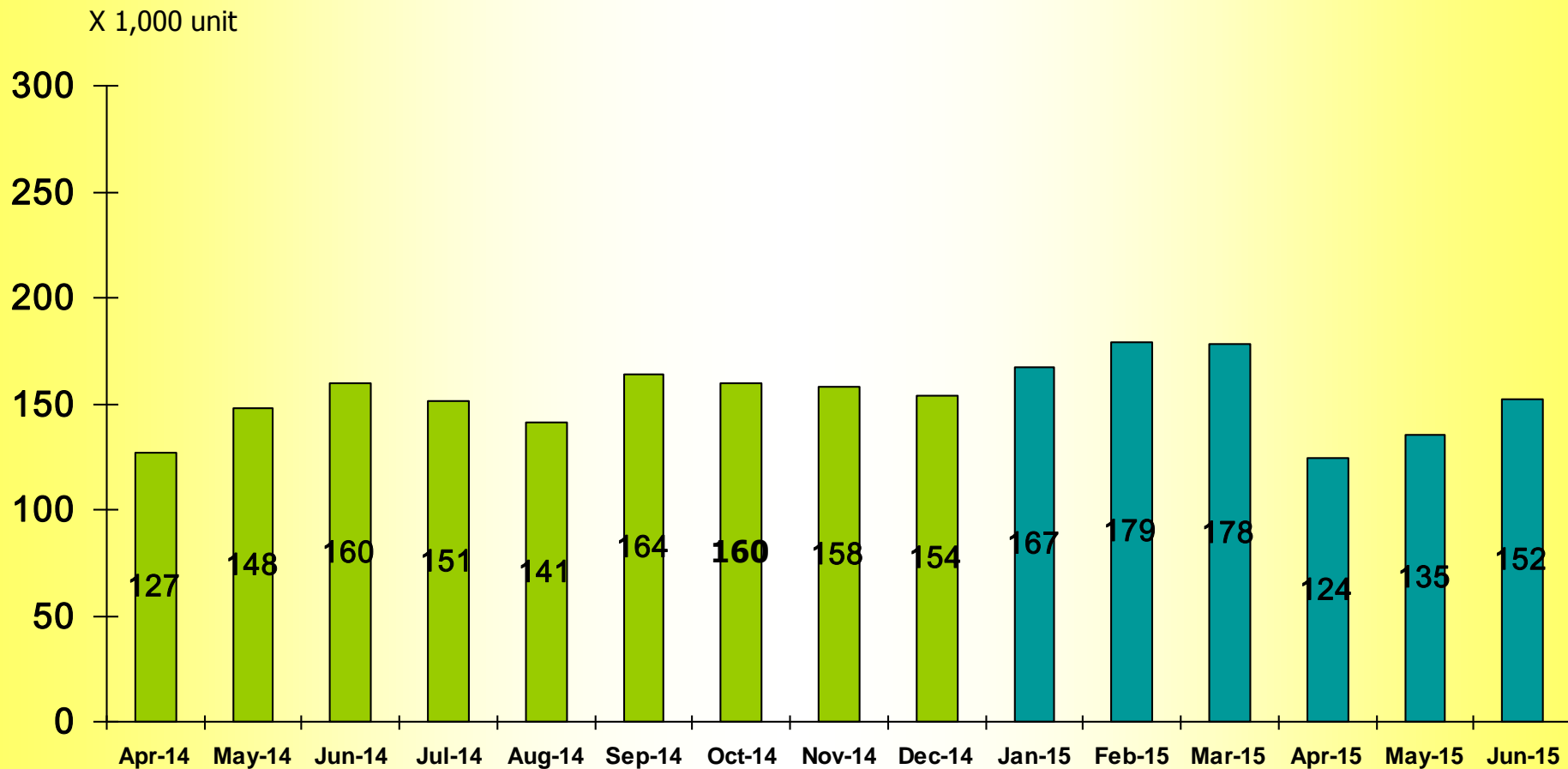
Compare with 2014
▼6%



■ 2014 ■ 2015

Source: The Federation of Thai Industries

4W Production (By Month) (April 2014 – June 2015)

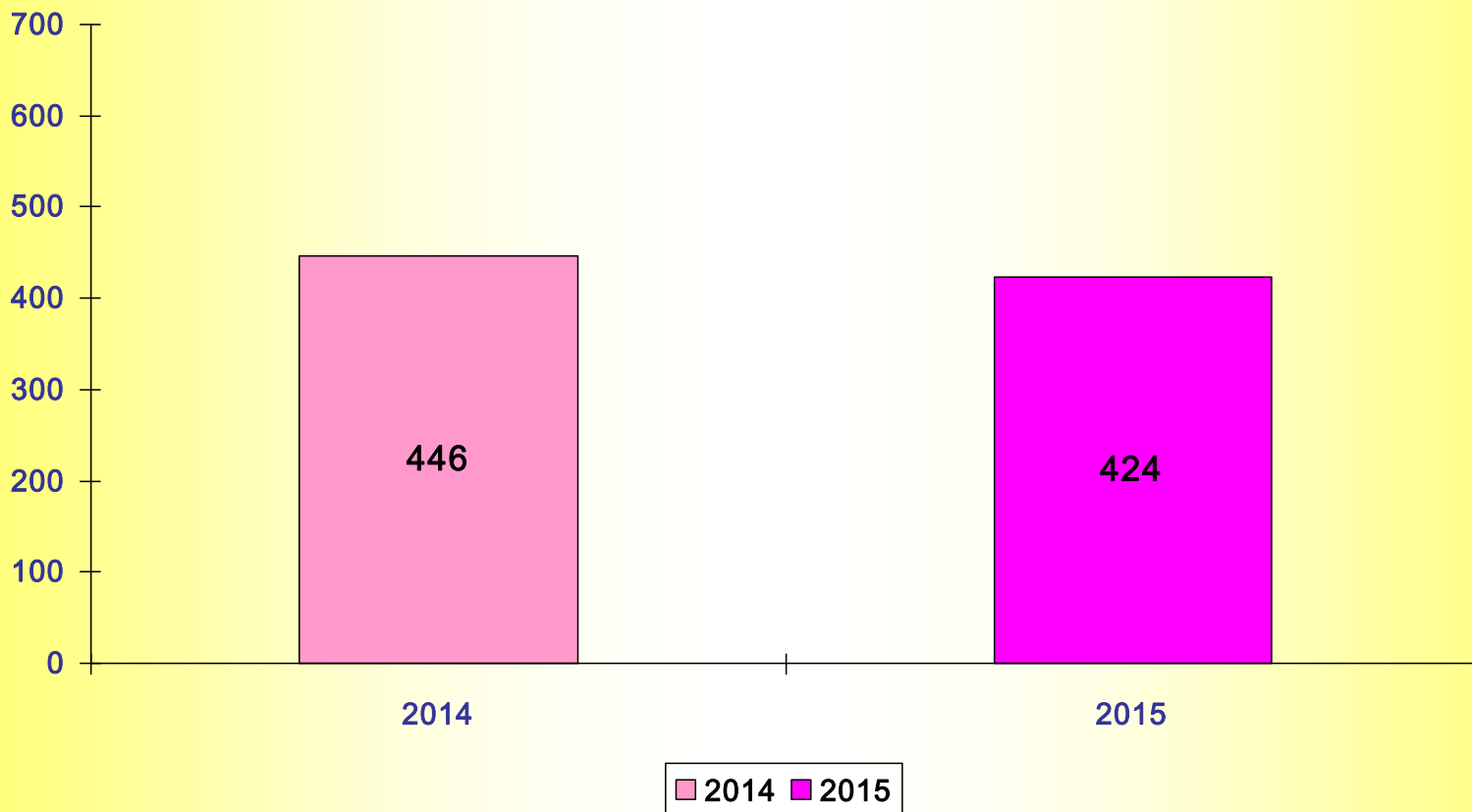


Source: The Federation of Thai Industries

2W Sales - Domestic (April – June 2015)

X 1,000 unit

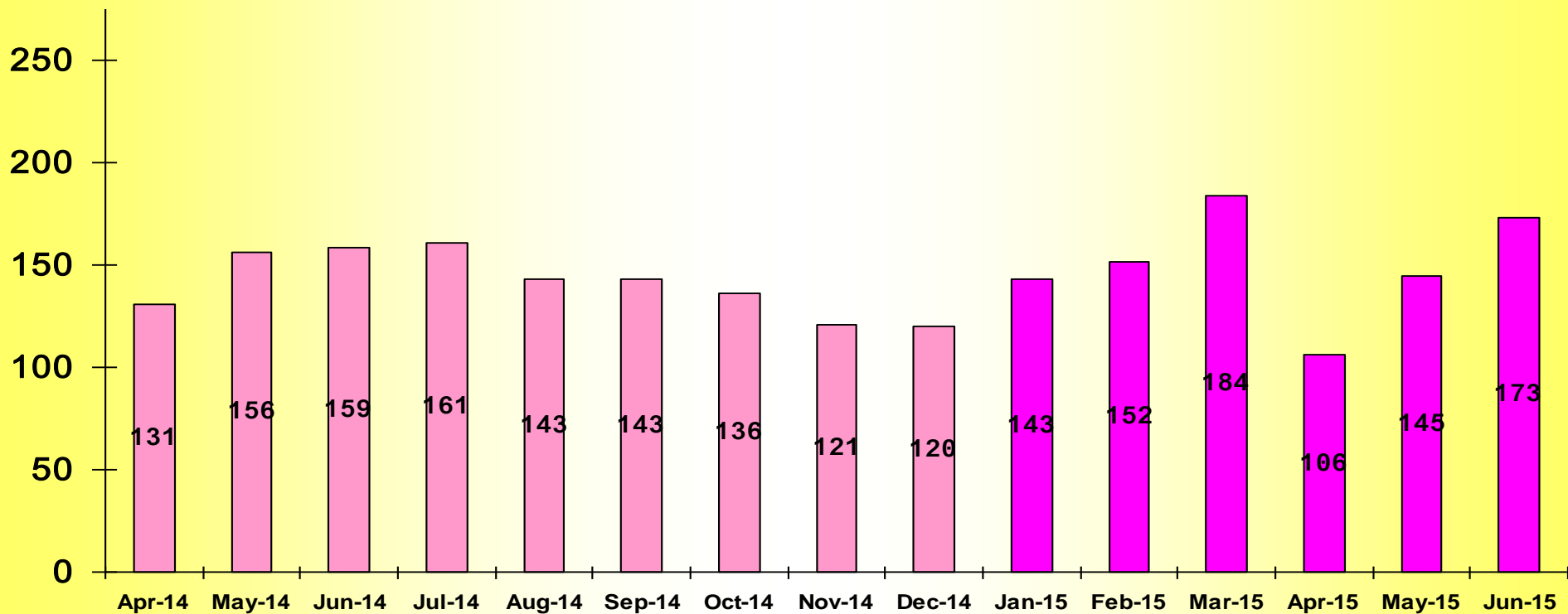
Compare with 2014
▼5%



Source: The Federation of Thai Industries

2W Sale (By Month) April 2014 – June 2015

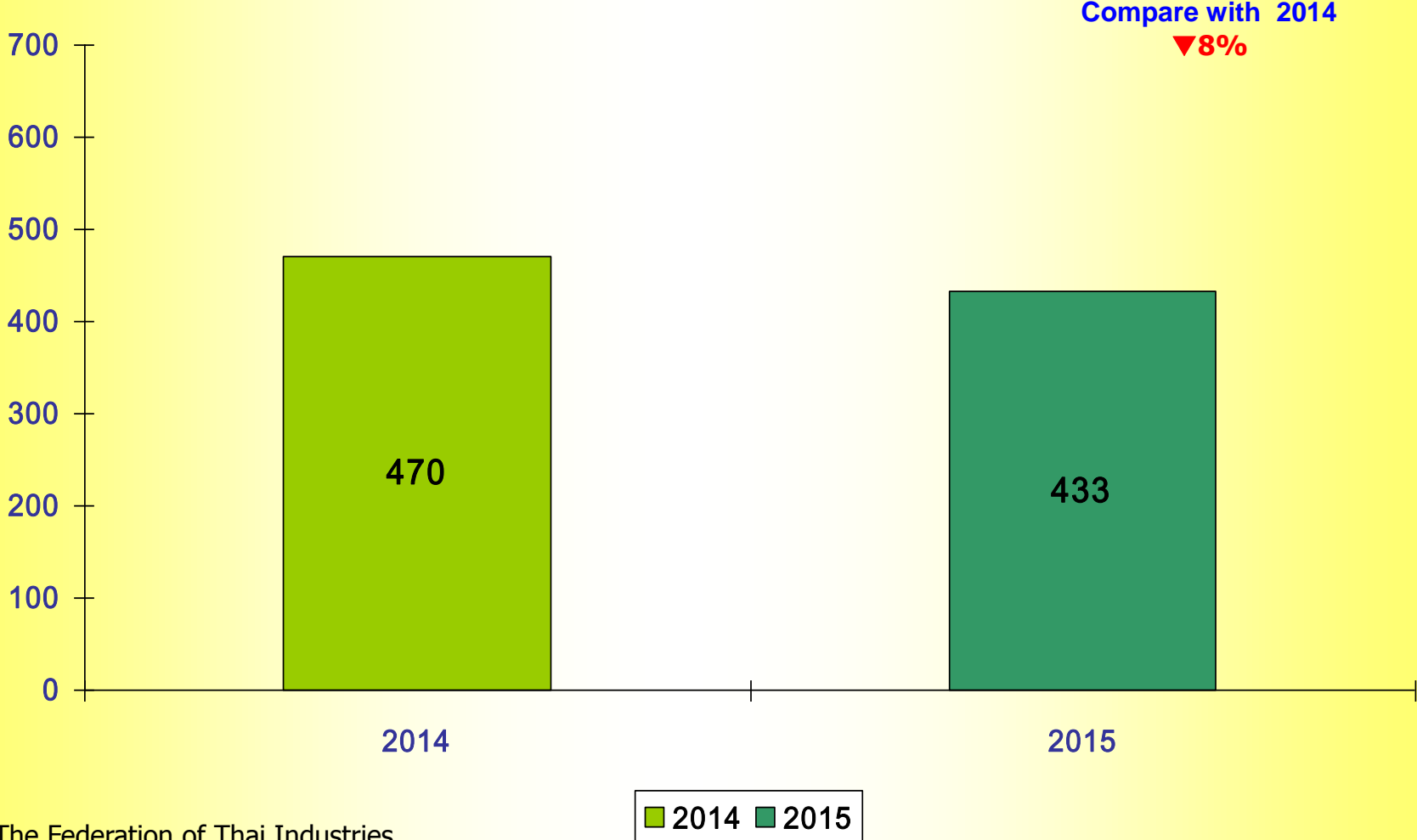
X 1,000 unit



Source: The Federation of Thai Industries

2W Production (April – June 2015)

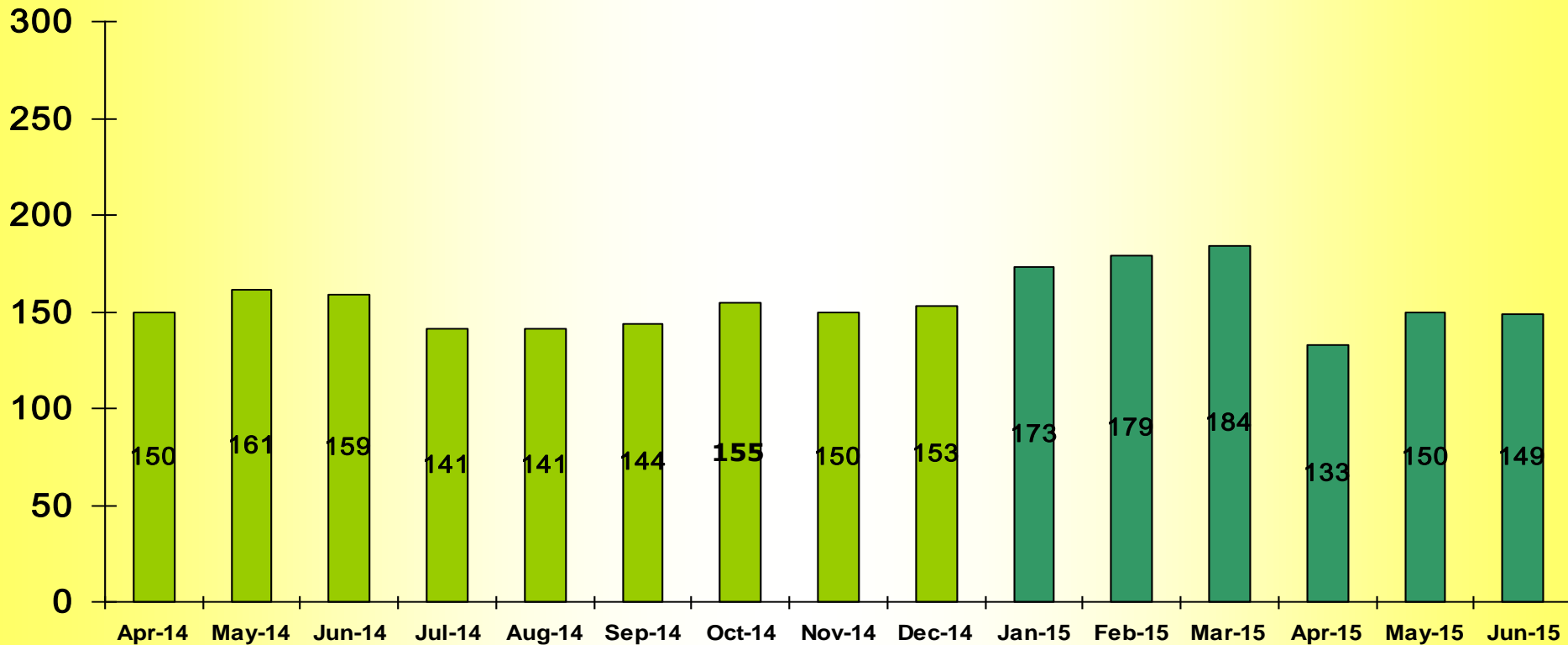
X 1,000 unit



Source: The Federation of Thai Industries

2W Production (By Month) April 2014 – June 2015

X 1,000 unit



Source: The Federation of Thai Industries

Agenda

1. Market Trend – 2015 (April – June)
2. The 1st Quarterly 2015 Financial Statement
3. New Products

Statement of Financial Position

The Equity Method	30 June 2015	31 March 2015	Change
	(M฿)	(M฿)	(%)
Current Assets	5,961.96	5,947.01	0.25
Non current assets	7,359.03	7,346.90	0.17
Total Assets	13,320.99	13,293.90	0.20
Current Liabilities	1,406.71	1,551.39	(9.33)
Non Current liabilities	204.66	203.19	0.73
Total Liabilities	1,611.37	1,754.57	(8.16)
Shareholders' Equity	11,709.61	11,539.33	1.48
Total Liabilities and Shareholders' Equity	13,320.99	13,293.90	0.20

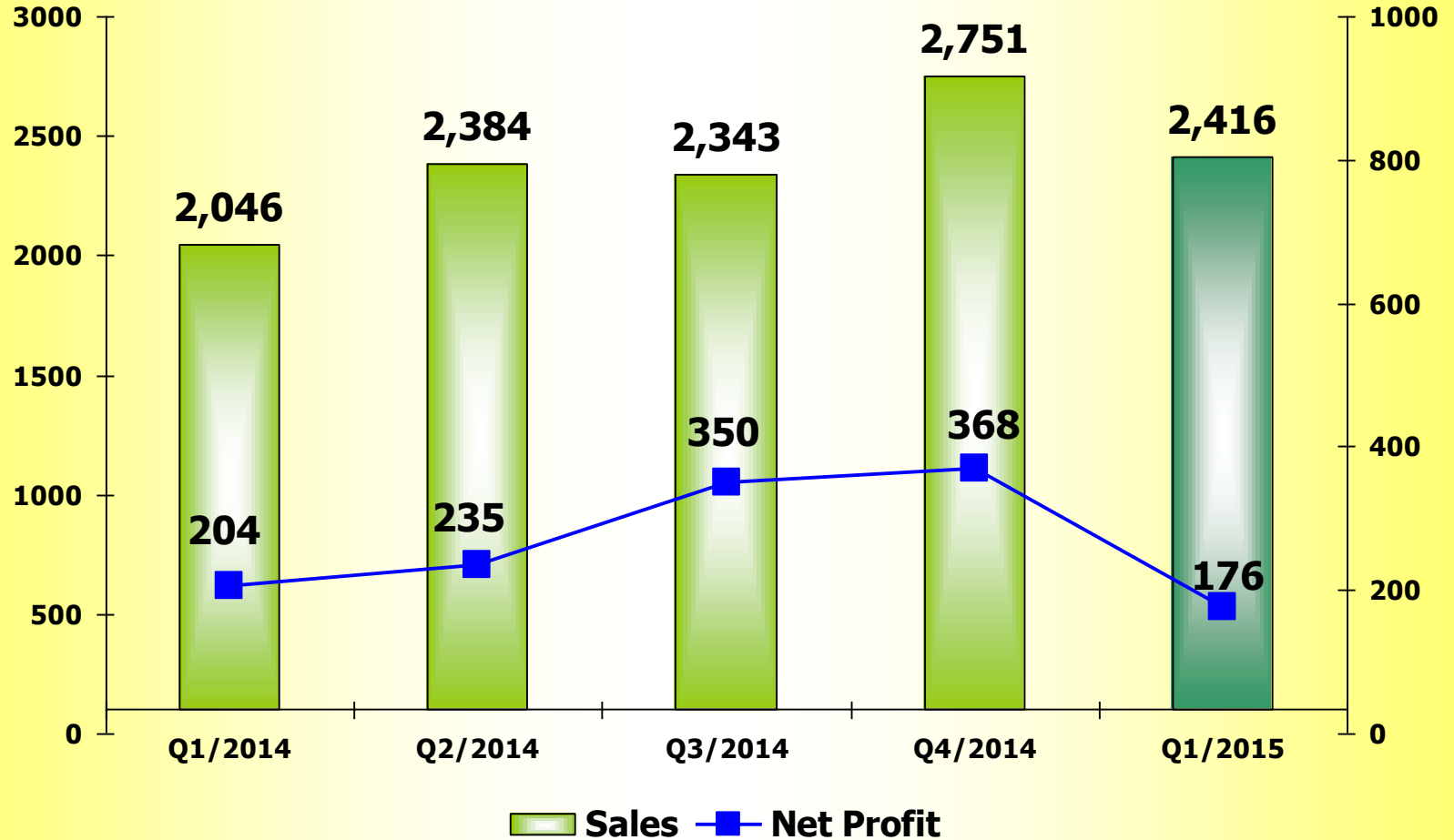
Statement of Income

The Equity Method	30 June 2015 (MB)	30 June 2014 (MB)	Change (%)
Sales	2,415.67	2,045.55	18.09
Cost of sales	2,085.28	1,685.40	23.73
Gross Profit	330.39	360.15	8.26
Selling and Administrative expenses	191.65	170.09	12.68
Share of profit from investments in associates	45.20	30.30	49.17
Profit before income tax	225.87	255.70	1(1.67)
Net profit for the period	176.11	204.48	1(3.87)

Analysis by Quarterly

Unit : MB

The Equity Method



Statement of Cash Flows

The Equity Method	30 June 2015 (MB)	31 June 2014 (MB)
Net Cash by Operating Activities	568.77	533.12
Net Cash used in Investing Activities	(21.48)	(47.21)
Net increase cash / Cash equivalents	47.29	385.91
Cash / Cash equivalents at beginning of the period	2,350.31	2,667.17
Effects of Exchange rate changes	1.05	(0.32)
Cash / Cash equivalents at end of the period	2,398.65	3,052.77

Agenda

1. Market Trend – 2015 (April – June)
2. The 1st Quarterly 2015 Financial Statement
3. New Products

Rear Combination Lamp



Lid Lamp

High Mount Stop Lamp

This slides contain statements that constitute forward-looking statements, plans for the Future, management targets, etc. relating to the Company and its subsidiaries. These forward-looking statements are base on current assumptions of future events and trends , which may be incorrect and are subject to risks and uncertainties.

Actual result may differ materially from those in such forward-looking statements as a result of various factors.

Unless otherwise noted, the financial data contained in these materials are presented under Thai Accounting Standards (TAS). The company disclaims any obligation to update or to announce any revision to forward-looking statements to reflect future events or developments.

Information concerning financial institutions other than the company and its subsidiaries are base on publicly available information.

These materials do not constitute an invitation or solicitation of an offer to subscribe for or purchase any securities and neither this document nor anything contained herein shall form the basis for any contract or commitment whatsoever.

Download : The presentation files at

www.thaistanley.com/Investor Relations/Analyst Meeting Presentation

For further questions, please contact :

Ms.Rattanaporn Boonwong : Investor Relations

Tel : 662-581-5462-3 (10 lines) , 662-977-9555 ext. 1164

Fax: 662-581-5397

E-mail : rattanaporn@stanley.co.th